

# growlumi<sup>®</sup>

THE CONCEPT OF GROW LIGHT



[www.SOL-Lightengine.com](http://www.SOL-Lightengine.com)

Enjoy the innovation, Enjoy the life

# HORTICULTURE LED luminaire GL-60

LED lighting is changing the face of greenhouse horticulture with the potential applications increasing at a phenomenal rate. The main benefit of LEDs over existing HPS systems is the efficiency with which electricity is converted into light, making LEDs more energy-efficient. LEDs also give the user more application options thanks to continuously variable dimmability and the endless variation in colour spectra. Finally, LEDs have the great advantage that they emit less heat, making it easier to control the greenhouse temperature.

## Application Information

### Applications

- Commercial greenhouses
- Garden centers
- Research facilities
- Universities

### Application Guide

All spectra are available in all luminaires. Through conducting more than 400 trials we have collected data on optimal light intensities in each growth phase for most commonly cultivated plants worldwide. We thus advise our customers on the spectrum and luminaire selection for their particular application.



PPE: 2,8  $\mu\text{mol}/\text{J}$



Consumption: 360 W

**PPF**  
(400-760nm)

1008  $\mu\text{mol}/\text{s}$



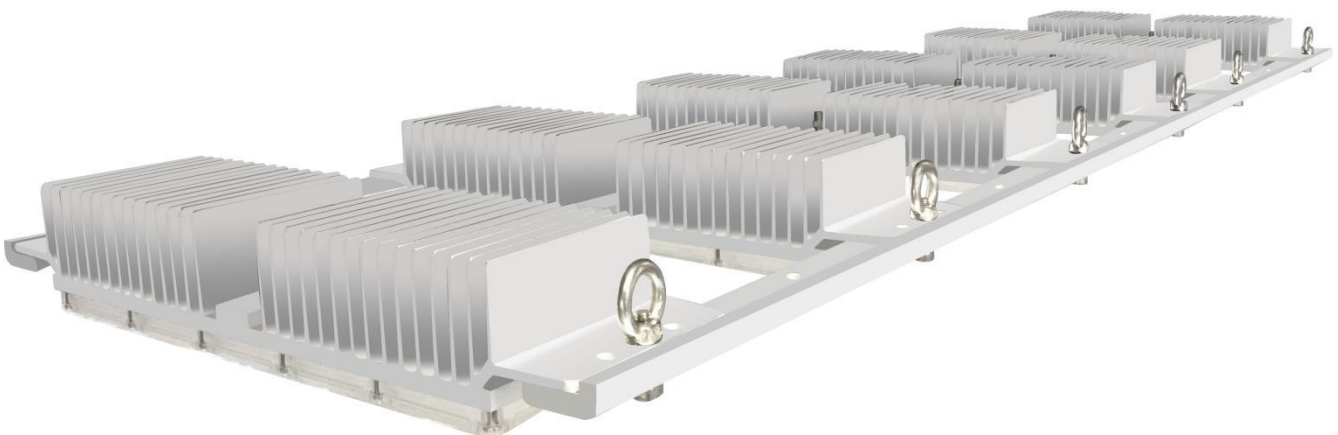
Beam-angle: 90° degree

**L90**

90% of light output after 35.000 hours

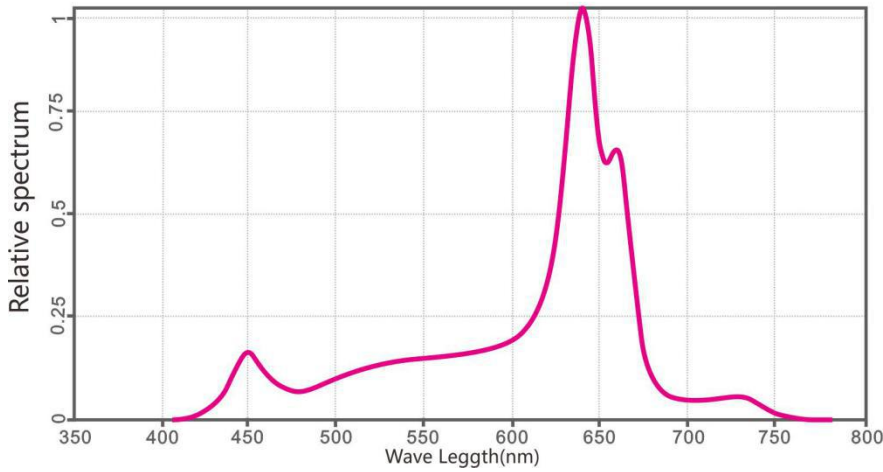
# SPECIFICATIONS

TECHNICAL SPECIFICATIONS			
HORTILEDTOP			
Part Number	<b>SOL-GL60-6</b>		
Input	90-305 V AC (HLG-320H-C700B)	Weight	5.5 kg (module only)
		Radiation angle	90°
Power factor	> 0.95	Colour spectra	Red/Blue (LB/MB/HB) Red/White (LB/HB) Full spectrum Custom project-based LED recipe
Power (maximum)	360 Watt		
Flux with R/B (LB)	1008 $\mu\text{mol/s}$		
Efficiency with R/B (LB)	2.8 $\mu\text{mol/J}$		
Size (LxWxH)	930x310 x50 mm	Emission wavelength range	400-760nm
Max. input current	700mA	Warranty	5 years
Dimmable	1-10V,PWM signal	waterproof grade	IP 67



# SPECTRUM

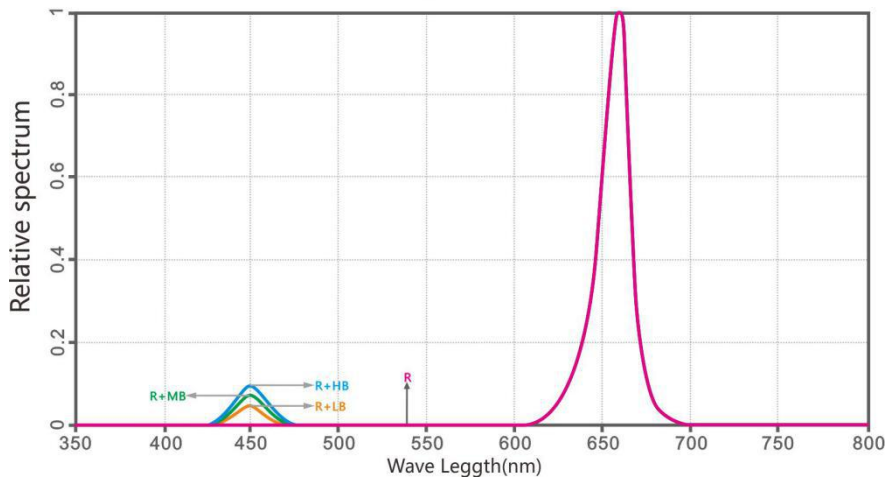
Relative spectrum Curve



## Full spectrum

Full spectrum with 450nm blue, 620nm red  
660nm deep red, 730nm infrared, and  
4000k white

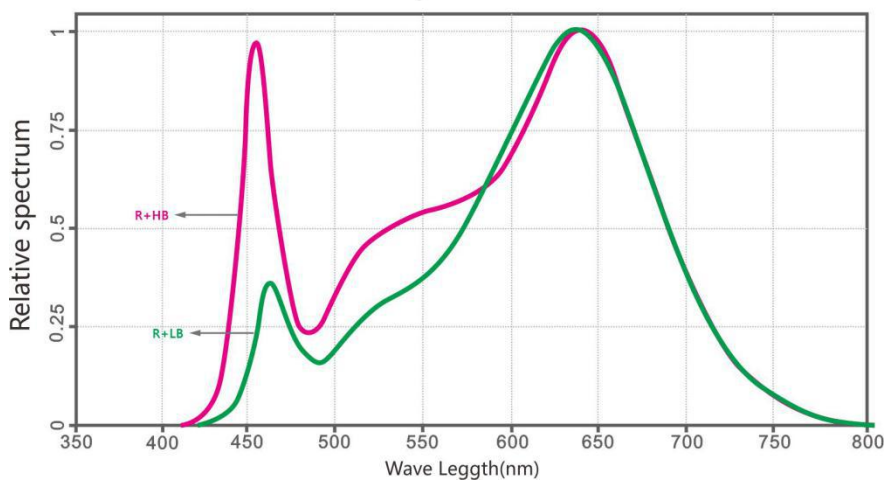
Relative spectrum Curve



## Red/Blue (LB/MB/HB)

- RED/BLUE
- 1, ALL RED
  - 2, LB BLUE 3%
  - 3, MB BLUE 5%
  - 4, HB BLUE 10%

Relative spectrum Curve



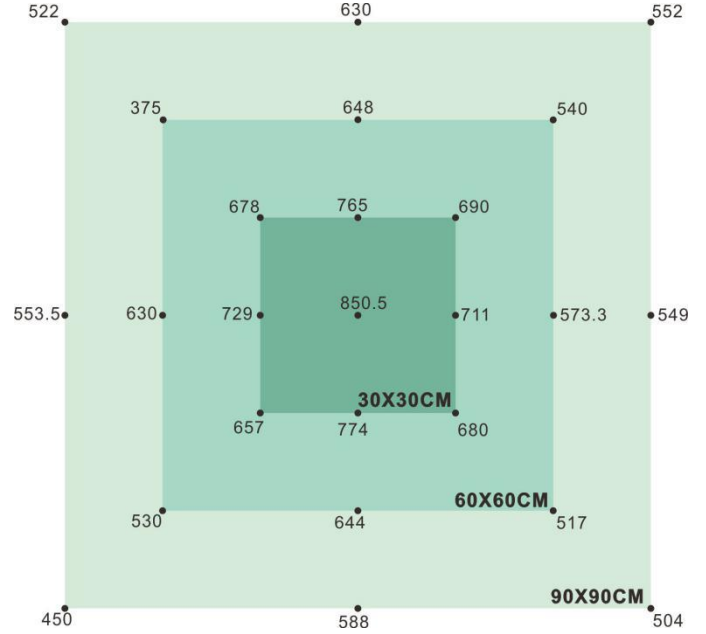
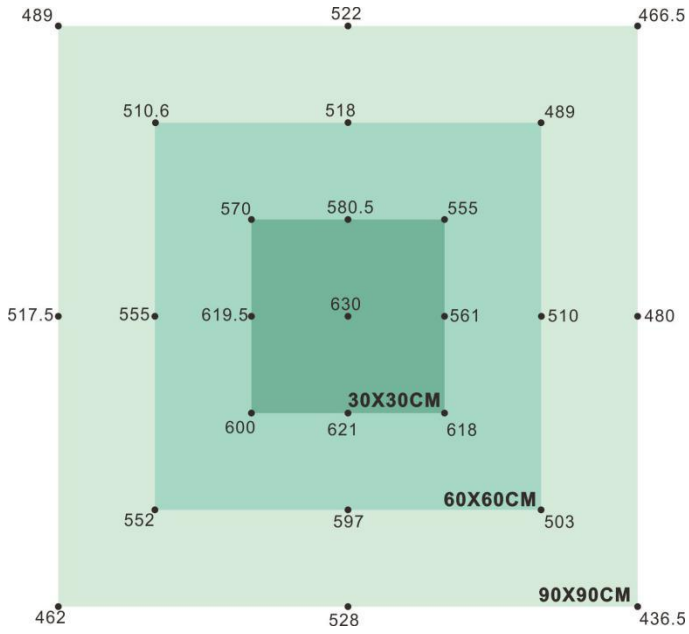
## Red/White (LB/HB)

- RED/White
- 1, LB BLUE 30%
  - 2, HB BLUE 100%

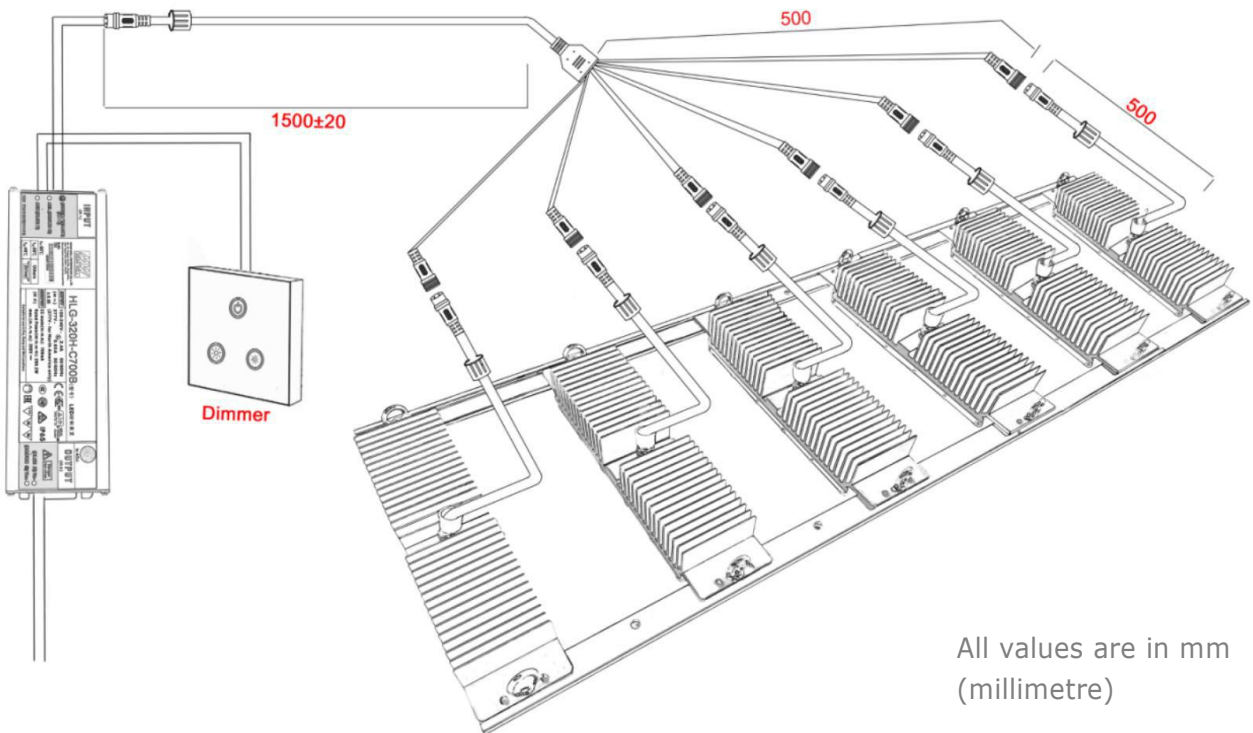
# TEST REPORT

Product : SOL-GL60-4      Power : 360 W  
 PPFD Unit : umol/m<sup>2</sup>/s      Height : 1.2 m  
 Date : 27.12.2018

Product : SOL-GL60-4      Power : 360 W  
 PPFD Unit : umol/m<sup>2</sup>/s      Height : 90 cm  
 Date : 27.12.2018



# DIMENSIONS



All values are in mm  
(millimetre)

## COMPLETE PRODUCT



**Better Lighting**  
**Better Plants**



[www.SOL-Lightengine.com](http://www.SOL-Lightengine.com)

Tel: +86-574-82827251 Fax: +86-574-82827250 E:sales@sol-tech.cn NINGBO SOL LIGHTING TECHNOLOGY CO.,LTD