

growlumi®

THE CONCEPT OF GROW LIGHT



www.SOL-Lightengine.com

Enjoy the innovation, Enjoy the life

HORTICULTURE LED luminaire GL-60

LED lighting is changing the face of greenhouse horticulture with the potential applications increasing at a phenomenal rate. The main benefit of LEDs over existing HPS systems is the efficiency with which electricity is converted into light, making LEDs more energy-efficient. LEDs also give the user more application options thanks to continuously variable dimmability and the endless variation in colour spectra. Finally, LEDs have the great advantage that they emit less heat, making it easier to control the greenhouse temperature.

Application Information

Applications

- Commercial greenhouses
- Garden centers
- Research facilities
- Universities

Application Guide

All spectra are available in all luminaires. Through conducting more than 400 trials we have collected data on optimal light intensities in each growth phase for most commonly cultivated plants worldwide. We thus advise our customers on the spectrum and luminaire selection for their particular application.



PPE: 2,8 $\mu\text{mol}/\text{J}$



Consumption: 240 W

PPF
(400-760nm)

672 $\mu\text{mol}/\text{s}$



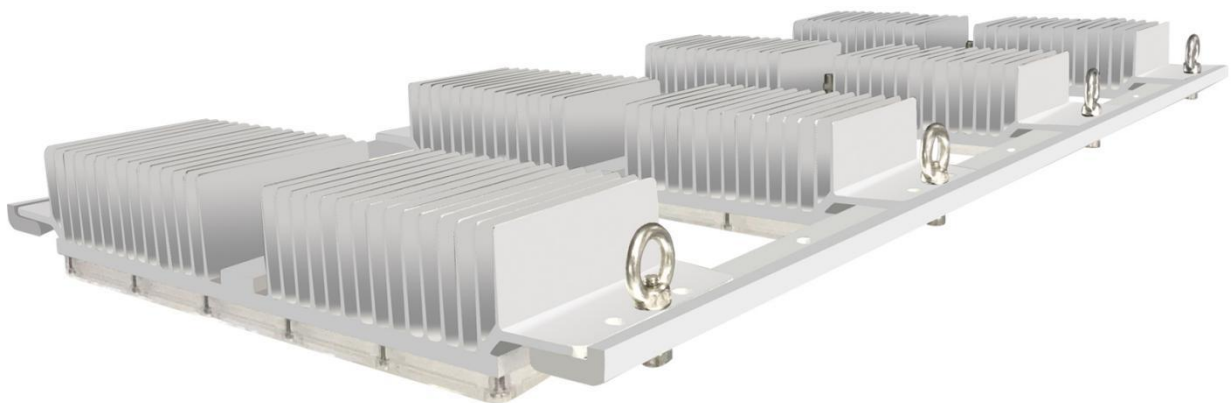
Beam-angle: 90° degree

L90

90% of light output after 35.000 hours

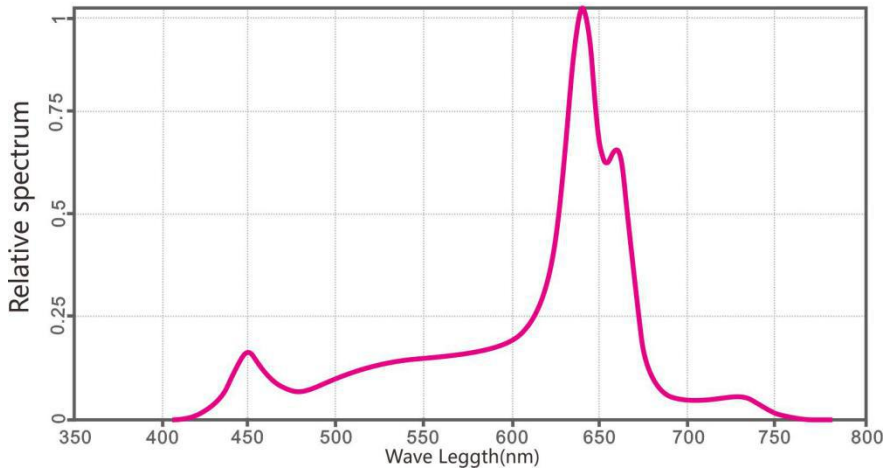
SPECIFICATIONS

TECHNICAL SPECIFICATIONS			
HORTILEDTOP			
Part Number	SOL-GL60-4		
Input	90-305 V AC (HLG-240H-C700B)	Weight	3.628 kg (module only)
		Radiation angle	90°
Power factor	> 0.95	Colour spectra	Red/Blue (LB/MB/HB) Red/White (LB/HB) Full spectrum Custom project-based LED recipe
Power (maximum)	240 Watt		
Flux with R/B (LB)	672 $\mu\text{mol/s}$		
Efficiency with R/B (LB)	2.8 $\mu\text{mol/J}$		
Size (LxWxH)	600x310 x50 mm	Emission wavelength range	400-760nm
Max. input current	700mA	Warranty	5 years
Dimmable	1-10V,PWM signal	waterproof grade	IP 67



SPECTRUM

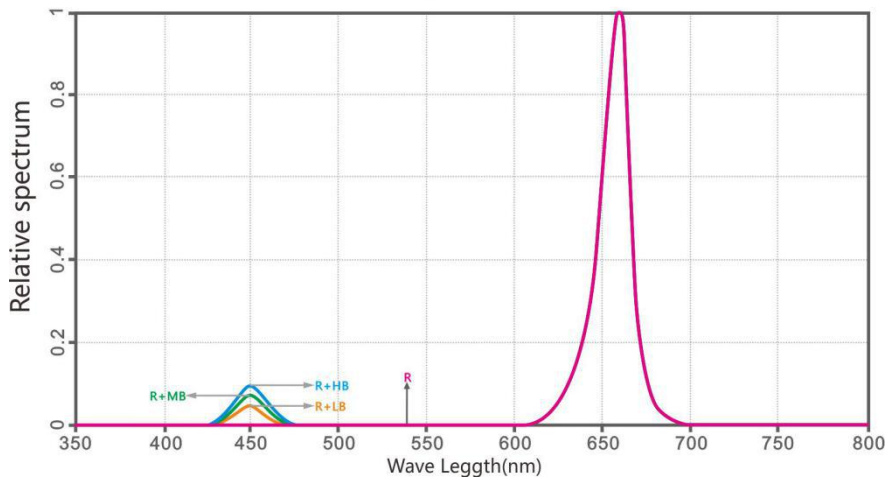
Relative spectrum Curve



Full spectrum

Full spectrum with 450nm blue, 620nm red
660nm deep red, 730nm infrared, and
4000k white

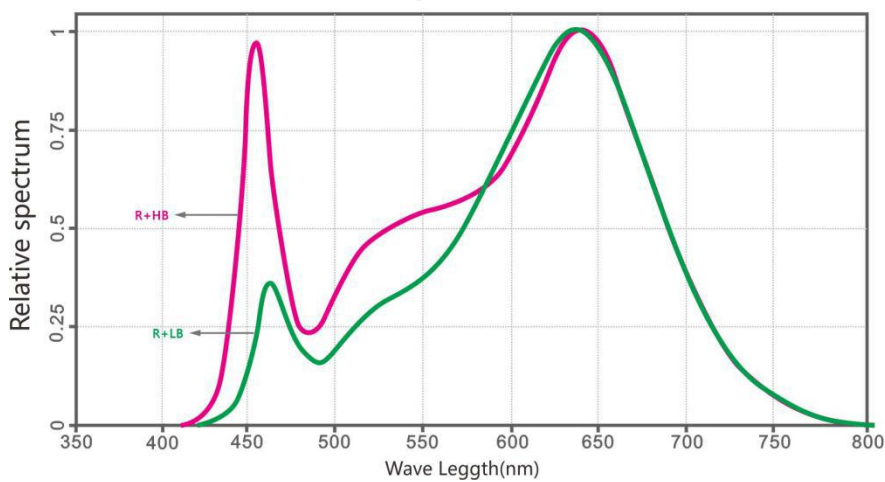
Relative spectrum Curve



Red/Blue (LB/MB/HB)

- RED/BLUE
- 1, ALL RED
 - 2, LB BLUE 3%
 - 3, MB BLUE 5%
 - 4, HB BLUE 10%

Relative spectrum Curve



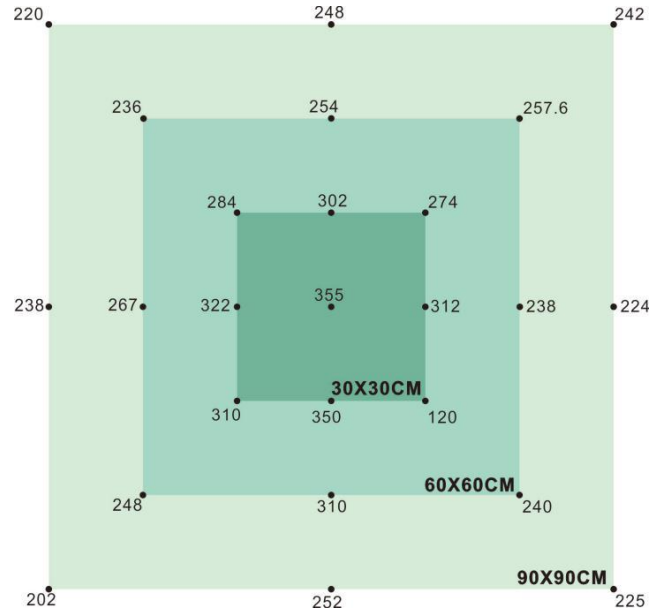
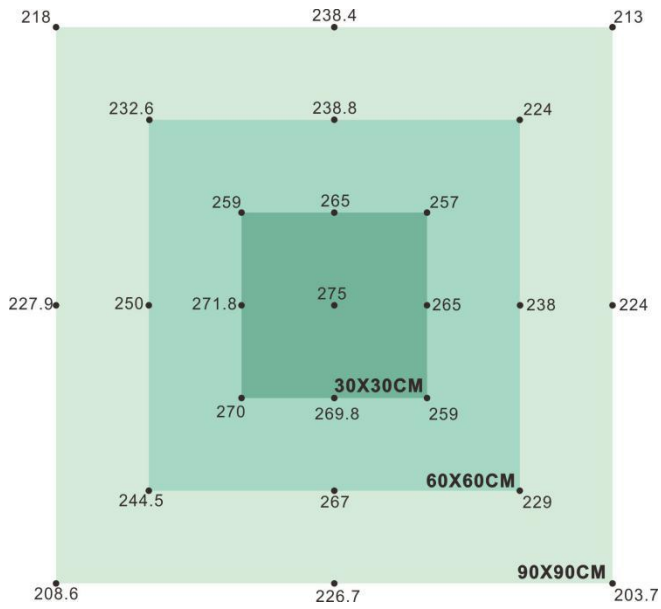
Red/White (LB/HB)

- RED/White
- 1, LB BLUE 30%
 - 2, HB BLUE 100%

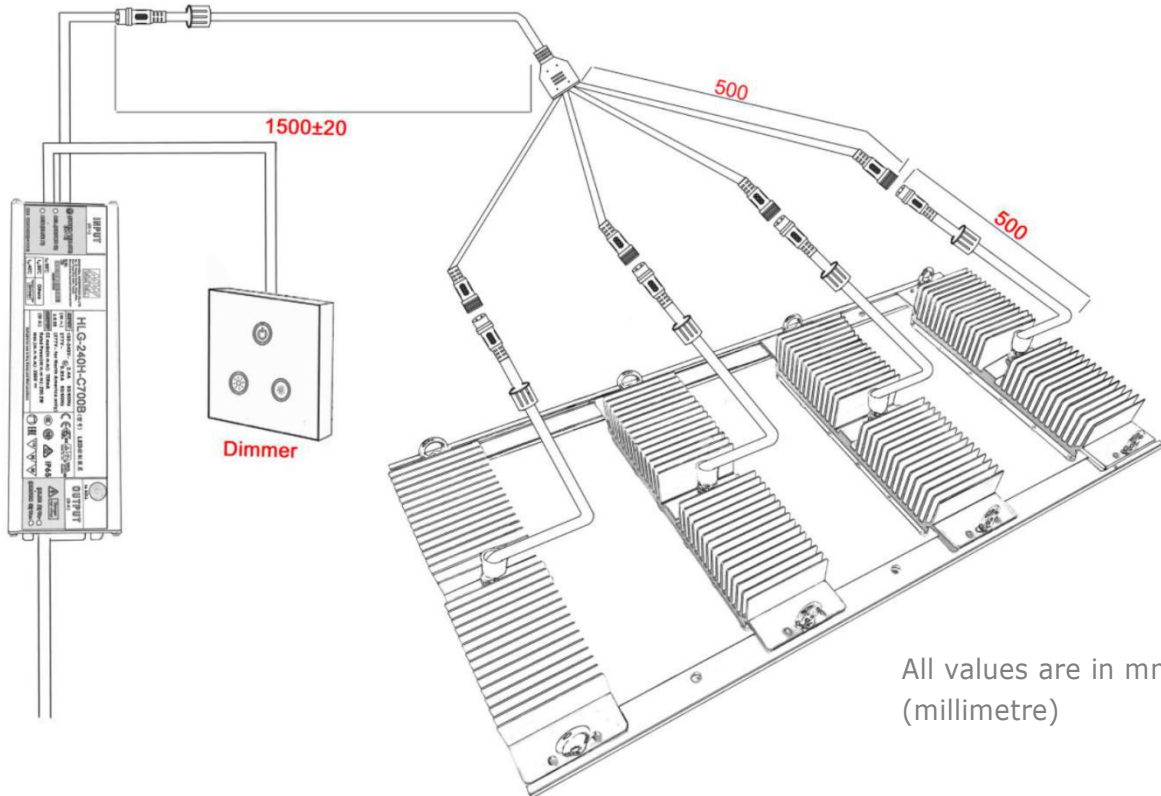
TEST REPORT

Product : SOL-GL60-4 Powert : 240 W
 PPFD Unit : umol/m²/s Hight : 1.2 m
 Date : 27.12.2018

Product : SOL-GL60-4 Powert : 240 W
 PPFD Unit : umol/m²/s Hight : 90 cm
 Date : 27.12.2018



DIMENSIONS



All values are in mm (millimetre)

COMPLETE PRODUCT



Better Lighting
Better Plants



www.SOL-Lightengine.com

Tel: +86-574-82827251 Fax: +86-574-82827250 E:sales@sol-tech.cn NINGBO SOL LIGHTING TECHNOLOGY CO.,LTD